

New Pfleiderer Collection 2021-2024: Design and function even closer to the user

Neumarkt, May 2021 – Pfleiderer, a leading engineered wood manufacturer in Europe, has presented the new 2021-2024 collection at interzum @home. With 66 new designs, the range now includes a total of 284 decors and eleven surface textures for furniture and interior design. Under the theme "Make your visions work," Pfleiderer is showing how the new collection, the service offering and a consistently sustainable orientation address the current needs of customers and create new design perspectives.

"The market is demanding ever more precisely fitting end products that meet the highest standards in terms of design and styling," says Stefan Zinn, Managing Director of Pfleiderer Deutschland GmbH and Chief Commercial Officer, Pfleiderer Group. "We have determined these requirements in numerous product analyses and expert surveys together with our customers and incorporated them into our new collection." For Pfleiderer, greater user focus also means fast and easy availability of materials, innovative digital tools for easier planning and ordering, and the most sustainable balance of products possible throughout their entire life cycle.

Optimized composite material system

All designs in the new Pfleiderer collection can be flexibly combined using the tried-and-tested DST system for decors, surface textures and core materials. "Our completely revised range ensures consistent and functionally well thought-out concepts in the process. This applies equally to the use across the different crafts of specific color shades and textures, as well as material properties such as antibacterial and easy-care surfaces or low combustibility," says Zinn.

At Pfleiderer, all materials from the design surface to the worktop come from a single source and are produced at one of five locations in Germany.

Contact:

Pfleiderer Deutschland GmbH

Stefan Göldner

Phone: +49 - 5241 – 871-366

Mail: stefan.goeldner@pfleiderer.com

Diana Bachmeier

Phone: +49 - 9181 – 28 8739

Mail: diana.bachmeier@pfleiderer.com

GOOS COMMUNICATION

Susanne Jung

Phone: +49 - 40 – 284 17 87-45

Mail: pfleiderer@goos-communication.com

Environmentally friendly value cycle

Sustainability and environmental protection have been part of Pfleiderer's corporate philosophy for many years. All engineered wood products are produced in accordance with a value cycle that is as environmentally friendly as possible. Most recently, LivingBoard, DecoBoard and PrimeBoard were awarded according to the Cradle to Cradle Certified™ Products Program, which assesses design and safety for future life cycles. LivingBoard received the silver award, while DecoBoard and PrimeBoard received bronze. Furthermore, the entire high-pressure laminate HPL range – as well as DecoBoard and LivingBoard – is now certified by the Blue Angel eco-label. The award honors the use of wood from sustainable forestry, the use of recycled materials and particularly low-emission products for a healthy indoor climate.

Digital tools facilitate everyday practice

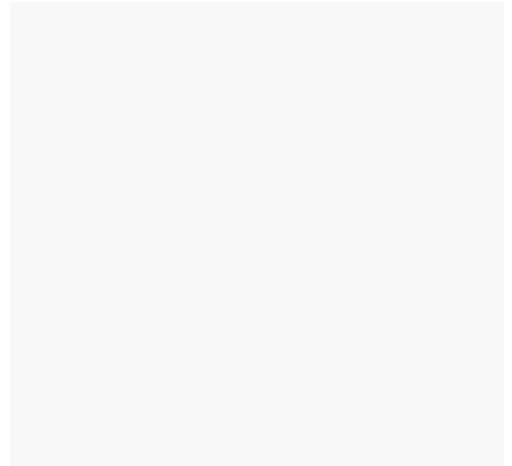
"In addition to the physical product range, we are constantly developing our digital applications," says Stefan Zinn. "Virtual experimentation rooms, online planning tools and planning data on the BIM platform BIMobject make everyday work easier for our business partners." For example, when a decor number is scanned, the newly developed Workapp refers to all relevant product information on the decor and at the same time enables direct sample orders or price inquiries from the selected distributor. As an alternative finder, the app also suggests suitable variations from the Pfleiderer collection for directly photographed decors, materials and surfaces. Users can also use the mood board tool to display decor groups that pick up on the ambience of easily uploaded personal photos.

Product family with useful additional functions

The materials grouped together in the FunXTional product line have useful additional functionalities. In PrimeBoard XTreme boards, for example, multi-layer coating technology ensures maximum brilliance as well as high color stability in high gloss or matte and easy processing. In Duropol Xtreme, the hard-wearing surface of the high-pressure laminate protects against fingerprints and traces of grease. Pfleiderer has also expanded the Duropol XTerior compact range for

Press Release

exterior applications to 35 stockable new decors, which are characterized by UV resistance and high mechanical strength values. As the XTerior compact F variant, the facade panels are also certified for structural fire protection.



Pfleiderer introduces EXPRESS stock and fast delivery program for new design collection

Neumarkt, May 2021 – Pfleiderer, a leading engineered wood manufacturer in Europe, has also introduced the EXPRESS collection for furniture and interior design at interzum @home, which is available particularly quickly, as part of its new 2021-2024 design collection. From the total of 284 decors in the new collection, customers can obtain all decors in two formats as HPL laminate and 139 decors - including proven evergreens - as melamine faced DecoBoard from the stock and fast delivery program. From 2021, this will also include numerous FunXTional Products with useful additional benefits.

With 55 plain colours, as well as the inclusion of FunXTional surfaces in the new EXPRESS collection, Pfleiderer offers a very broad selection tailored to today's customer requirements. All decors are available with at least one standard surface texture and are equipped with an antibacterial surface as standard. In addition, Pfleiderer manufactures all products as part of a multiple-certified and extremely environmentally friendly value cycle and can therefore offer the entire Express range with the Blue Angel. DecoBoard and PrimeBoard also have certification under the Cradle to Cradle Certified™ Products Program.

The materials grouped together as FunXTional Products have versatile additional functionalities. In the case of Duropal Xtreme and XTreme plus, for example, the hard-wearing surface of the high-pressure laminate protects against fingerprints and traces of grease. Pfleiderer is now expanding the Duropal XTerior compact range, developed for exterior applications, to 35 decors from stock. All XTerior products feature good UV resistance and high mechanical strength values.

"With the new EXPRESS collection, we are aligning our range even more closely with the needs of the market and ensuring the rapid availability of numerous classic and smart surfaces," says Rüdiger Jürke, Product Manager Direct Coated Boards at Pfleiderer

Contact:

Pfleiderer Deutschland GmbH

Stefan Göldner

Phone: +49 - 5241 – 871-366

Mail: stefan.goeldner@pfleiderer.com

Diana Bachmeier

Phone: +49 - 9181 – 28 8739

Mail: diana.bachmeier@pfleiderer.com

GOOS COMMUNICATION

Susanne Jung

Phone: +49 - 40 – 284 17 87-45

Mail: pfleiderer@goos-communication.com

Press Release

Deutschland GmbH. "The integration of FunXTional Products will also give customers even easier and faster access to these special functional surfaces from 2021.

From stock, the EXPRESS decors are available as DecoBoard in the format 2,800 x 2,100 x 19 mm and HPL laminate in the formats 2,800 x 2,070 or 4,100 x 1,300 mm within 72 hours to the four day. In addition to the wood-based materials available from stock, other thicknesses of 8-38 mm and surface textures from the DecoBoard and laminate range, as well as all 284 decors, are also available as Duropal bonded elements within ten working days in the fast delivery program..

FunXTional Products: Pfleiderer presents practical surfaces of the new collection

Neumarkt, May 2021 – Particularly robust and easy to maintain: with the FunXTional product family, Pfleiderer offers wood-based materials with practical additional benefits for furniture and interior design. The user-friendly products are an essential part of the 2021-2024 collection presented at interzum @home, and the family includes Duropal XTreme plus, Duropal XTreme and PrimeBoard XTreme. In the new collection, these products are available immediately from stock in a total of twelve decor-matched finishes and thus visually coordinated.

"Dirt, germs, acids, sharp objects or abrasion - many interior surfaces have to withstand heavy loads. At the same time, a visually high-quality look with a consistent decor is in vogue with many customers. We have developed the practical and at the same time elegant FunXTional Products according to these standards," says Christian Stieffermann, Product Manager HPL and Elements at Pfleiderer Deutschland GmbH. "The exceptional surface quality thereby meets the highest standards of hygiene, practicality, durability and user-friendliness."

Antibacterial effect eliminates germs

For Duropal XTreme plus, six additional decors will be launched with the 2021-2024 collection. Planners and users will benefit from more extensive design freedom for designs with a velvety-soft feel and matte, low-reflection surfaces. In addition to its durability, impact resistance and outstanding anti-fingerprint effect, the scratch-resistant Duropal XTreme plus is also suitable for heavy-duty horizontal contact surfaces, such as tables and counters. Increasingly important are hygienic properties of surfaces, whether in areas frequented by the public or in private areas. Duropal XTreme plus has a highly antibacterial surface and meets the high hygienic requirements in public and private areas, also for the future. It reduces 99 percent of all germs within one day and lowers the risk of people becoming infected with germs via the surfaces.

Contact:

Pfleiderer Deutschland GmbH

Stefan Göldner

Phone: +49 - 5241 – 871-366

Mail: stefan.goeldner@pfleiderer.com

Diana Bachmeier

Phone: +49 - 9181 – 28 8739

Mail: diana.bachmeier@pfleiderer.com

GOOS COMMUNICATION

Susanne Jung

Phone: +49 - 40 – 284 17 87-45

Mail: pfleiderer@goos-communication.com

Easy-care surfaces and seamless transitions

The easy-care Supermatt surface material has a practical anti-fingerprint effect. "In addition, Duropal XTreme is one of the few postformable finishes available. This also enables curved surfaces and seamless transitions," says Stiefermann. The Duropal SolidColor XTreme variant offers an unusually uniform appearance due to the complete through-colouring of the laminate. Surfaces in crystal white, anthracite gray or volcanic black can thus be implemented as if from a single mold without visible joints.

Appealing contrasts and resistant material

PrimeBoard XTreme, a wood-based panel with a hot coat finish, is ideal for vertical applications such as kitchen and furniture fronts. In addition to the high decor variety, a multi-layer lacquering technology ensures brilliance with optimum colour stability, good processability and high robustness. The matt and high-gloss finishes allow stylish design combinations. Also very popular is the MDF black natural finish, which is appreciated by users for its natural-looking, black solid-colored fiberboard. PrimeBoard XTreme is available in the 2,800 x 2,100 mm format.

For heavy-duty horizontal surfaces in damp and wet areas, Duropal Compact XTreme plus with its homogeneously black, gray or white solid-colored core is impressive. This high-quality and unique compact board has a hard-wearing, electron beam-hardened surface on both sides with high scratch resistance and anti-fingerprint effect, as well as high moisture and impact resistance thanks to the compact core. This product is also equipped with antibacterial as standard, with a germ reduction of 99% within one day.

Duropol XTerior compact: Pfleiderer expands outdoor range in its new collection

Neumarkt, May 2021 – Pfleiderer, a leading engineered wood manufacturer in Europe, has showcased new products for facade and outdoor applications when it presented its 2021-2024 collection at interzum @home. The company is expanding its range for the high-pressure laminate Duropol XTerior compact and the flame-retardant Duropol XTerior compact F to a total of 35 decors held in stock, which can thus be delivered within 72 hours on the tour day. In total, partners of Pfleiderer can choose from 172 outdoor decors in the entire collection.

"Facades fulfil essential functional and aesthetic tasks. They give buildings shape, protect the building fabric and offer pleasant room comfort," says Manfred Wude, Key Account Manager Facade.

"Surfaces for façades should be permanently resistant to rain, sun and other weathering. Pfleiderer has designed the high-quality Duropol XTerior compact according to these requirements. In addition, the choice of decor also plays an important role; Pfleiderer offers a unique variety on the market here. This enables attractive combinations with other surfaces from our range."

Resistant to external influences

Duropol XTerior compact is characterised by high UV and weather resistance. The high-pressure laminate is very easy to process, enables simple cleaning and offers a high-quality surface appearance. The product is therefore not only suitable for façades, but also for outdoor furniture, balcony parapets, roof soffits or playground equipment. Pfleiderer supplies Duropol XTerior compact in the cut-to-size format 2,800 x 2,070 mm in thicknesses of 6 and 8 mm. Other thicknesses are available on request.

Fire protection at a high level

For preventive fire protection applications in exterior areas, Pfleiderer developed Duropol XTerior compact F. The high-end laminate has a

Contact:

Pfleiderer Deutschland GmbH

Stefan Göldner

Phone: +49 - 5241 – 871-366

Mail: stefan.goeldner@pfleiderer.com

Diana Bachmeier

Phone: +49 - 9181 – 28 8739

Mail: diana.bachmeier@pfleiderer.com

GOOS COMMUNICATION

Susanne Jung

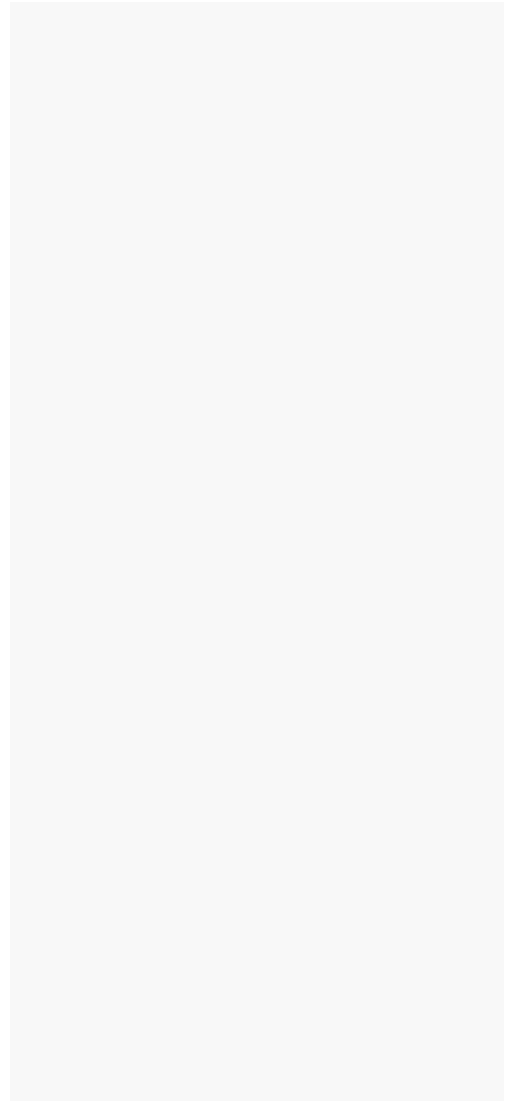
Phone: +49 - 40 – 284 17 87-45

Mail: pfleiderer@goos-communication.com

flame-retardant quality in accordance with EN 438-6:EDF for intensive decors in accordance with EN 438-6:EGF and is used in construction heights from seven metres. "A typical application for Duropal XTerior compact F is multi-storey buildings. Our flame-retardant product can delay the spread of fires and thus decisively increase building safety," explains Wude.

Decors can be combined inside and outside

The Exterior Matt surface texture gives Duropal XTerior compact and Duropal XTerior compact F a particularly elegant surface texture. The fine-grained surface in Supermatt provides a sandy appearance and reflects the light, creating an attractive shimmer. "A key decision criterion in the selection of materials and design of exterior applications is aesthetic preference. Facades must visually match windows and doors, outdoor furniture ideally matches the interior design," says Wude. Indoors and outdoors, the different plain and material decors such as wooden and stone surfaces of Duropal XTerior compact can be combined with other Pfleiderer products, enabling extremely varied design options.



Pfleiderer: Sustainability at the core of the new collection

Neumarkt, May 2021 – With the presentation of its new 2021-2024 collection at interzum @home, Pfleiderer showed how its consistent focus on sustainability has enabled the company to develop an extensive and comprehensively certified range of low-emission and environmentally friendly engineered wood products. These can be found in all design and surface texture combinations in the new collection.

The increasing scarcity of raw materials, environmental pollution and the consequences of climate change require companies to act more sustainably throughout the entire value chain. Pfleiderer defined the principles of the circular economy for itself years ago and introduced intelligent material and energy cycles for the sustainable production of its engineered wood at all its sites.

"We not only manufacture our products with the greatest care, but meanwhile also within the framework of a certified environmental management system - energy self-sufficient and without releasing any additional carbon dioxide. We take the requirements of ecology into account throughout and have the effects on the environment regularly evaluated to derive potential for improvement," says Stefan Göldner, Head of Communications at Pfleiderer Deutschland GmbH.

High-quality engineered wood without targeted tree felling

Pfleiderer sources and processes only recycled wood and co-products that are reused in the so-called cascade utilization process over several stages from harvesting to recycling. The recycled wood consistently complies with quality classes A1 and A2 in accordance with the Waste Wood Ordinance and is free of any chemical, metallic or mineral impurities. The co-products are sawdust, wood chips, slabs, and end pieces from industry or forestry. Pfleiderer thus achieves a recycling rate of around 66 percent and also ensures that no old trees are felled specifically for Pfleiderer panels. After sorting, gluing,

Contact:

Pfleiderer Deutschland GmbH

Stefan Göldner

Phone: +49 - 5241 – 871-366

Mail: stefan.goeldner@pfleiderer.com

Diana Bachmeier

Phone: +49 - 9181 – 28 8739

Mail: diana.bachmeier@pfleiderer.com

GOOS COMMUNICATION

Susanne Jung

Phone: +49 - 40 – 284 17 87-45

Mail: pfleiderer@goos-communication.com

compacting and pressing, new engineered wood panels are produced that meet the highest health and quality standards.

Comprehensively certified pioneering work

Pfleiderer's consistent focus on sustainability is also reflected in numerous certifications. With certificates for meeting the DIN EN ISO 14001*, ISO 50001* standards at company level, as well as certificates for PEFC* (PEFC™ license code 04-32-0828), FSC* (FSC® license code C011773), Blue Angel* and the Cradle to Cradle Certified™ Products Program, Pfleiderer is currently setting high standards throughout the industry.

"In September 2020, the most holistic award to date was made by the non-profit Cradle to Cradle Products Innovation Institute. Pfleiderer was the first market participant to have selected product families evaluated with regard to a consistent circular economy system. This includes the criteria of material health, recyclability, use of renewable energies, responsible use of water, and social justice. Here, the LivingBoard family achieved very respectable results with a C2C certificate in silver and the DecoBoard and PrimeBoard families in bronze," explains Göldner.

By awarding almost all HPL and compact laminates as well as composite elements with the Blue Angel, Pfleiderer is also the first supplier to offer a full range of particularly sustainable wood-based materials with this independent environmental label. The seal certifies the use of wood from sustainable forestry and recycled materials, as well as a healthy indoor climate that goes well beyond the legal requirements.

This means that the HPL and DecoBoard substrate materials available as standard in the new collection are particularly sustainable, so that even particularly environmentally conscious consumers can use and recommend all Pfleiderer products with a clear conscience.

Further explanations of the standards and certificates mentioned:

ISO 14001:2015

Environmental management standard that specifies globally recognized requirements for an environmental management system. Focuses on the continuous improvement process as a means of achieving an organization's defined environmental performance objectives using the "plan, execute, control, optimize" method.

ISO 50001:2011 (ISO 50003)

Energy management standard that describes the requirements for an organization's energy management system. Focuses on continuous improvement of energy-related performance, i.e. optimization of energy use and energy efficiency.

PEFC

The Programme for the Endorsement of Forest Certification Schemes™ is an international certification system for sustainable forestry according to ecological, social and economic aspects. In Germany, around 7.6 million hectares of forest are certified according to PEFC. The content of the certification system for sustainable forest management is based on resolutions of the follow-up conferences to the Rio Conference on the Environment (1992). Specifically, these are the criteria and indicators adopted at the Ministerial Conferences on the Protection of Forests in Europe (Helsinki 1993, Lisbon 1998, Vienna 2003) by 37 nations in the Pan-European Process. The primary objective of PEFC is to document and improve sustainable forest management in terms of economic, ecological and social standards.

FSC

Forest Stewardship Council® (FSC) was established to promote ecologically appropriate, socially beneficial and economically viable management of the world's forests to ensure that the needs of the present generation can be met without compromising the needs of future generations. The FSC has defined globally uniform basic principles for responsible forest management. For their implementation, indicators are developed at national level according to a uniform procedure. FSC® is an international certification system that defines ten standardized criteria for sustainable forest management. Wood bearing the FSC seal comes from sustainable forestry operations. Certified operations are inspected annually by independent auditors.

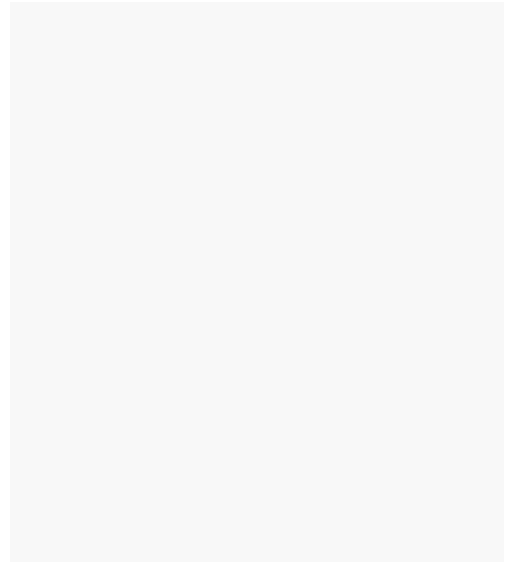
Blue Angel

The environmental seal for particularly environmentally friendly products and services was introduced in Germany in 1978. For particleboard, formaldehyde emissions are an important criterion for the award of the Blue Angel. Boards which, thanks to so-called formaldehyde scavengers, have an emission level approx. 50% lower than standard boards are awarded the RAL UZ 76 - Blue Angel eco-label. For the award of this eco-label, the boards are certified by the RAL Institute.

Press Release

Cradle to Cradle (C2C)

Cradle to Cradle (C2C) is an approach for a continuous and consistent circular economy. The principle, which can also be perceived as a philosophy or system, was designed in the late 1990s by the German chemist Michael Braungart and the U.S. architect William McDonough. The C2C certification (Cradle to Cradle Certified™ product standard) for circular economy systems has been awarded since 2010 by the non-profit organization Cradle to Cradle Products Innovation Institute based in San Francisco. Products are evaluated according to the aspects of material health, recyclability, use of renewable energy, responsible use of water, and social justice.



Digital comfort in the selection of Pfleiderer decors

Neumarkt, May 2021 – Digital applications make daily work easier for planners, designers and fabricators in the furniture and interior design industry. At the presentation of the 2021-2024 design collection at interzum @home, Pfleiderer presented its latest digital tools. The user-centric "Workapp" brings relevant information about a decor to the screen in just a few seconds. The Alternative Finder suggests harmonious variations from the Pfleiderer range. The mood board tool recommends decor groups to users that match the image atmosphere of their own photographs.

"Pfleiderer's digital offerings go far beyond pure online retailing. In the meantime, all participants can access numerous applications to discover and plan materials, furniture and entire living worlds," says Ulrike Lukas, Head of Marketing at Pfleiderer Deutschland GmbH. "Anyone who has experienced the benefits of our virtual experimentation rooms, online planning tools or planning data on the BIM platform BIMObject will no longer want to do without them."

Workapp with practical decor scanner

Digital support for customers has been a matter of course for Pfleiderer for years. The latest development is the "Workapp", a decor scanner for smartphones and tablets. With this app, users can capture the number or color of a decor via the camera of their mobile device and call up detailed product information. This includes delivery times, formats or amazingly real detailed views of surface textures.

The Alternative Finder suggests suitable variations from the Pfleiderer collection for a material or decor photographed with the app. Direct sample orders or price inquiries with selected distributors are also possible with just a few clicks. "Anyone looking for a specific shade of green or a wood color in our collection will quickly find what they are looking for with the decor scanner," says Ulrike Lukas. "This also makes it easy to run through spontaneous ideas. Together with the

Contact:

Pfleiderer Deutschland GmbH

Stefan Göldner

Phone: +49 - 5241 – 871-366

Mail: stefan.goeldner@pfleiderer.com

Diana Bachmeier

Phone: +49 - 9181 – 28 8739

Mail: diana.bachmeier@pfleiderer.com

GOOS COMMUNICATION

Susanne Jung

Phone: +49 - 40 – 284 17 87-45

Mail: pfleiderer@goos-communication.com

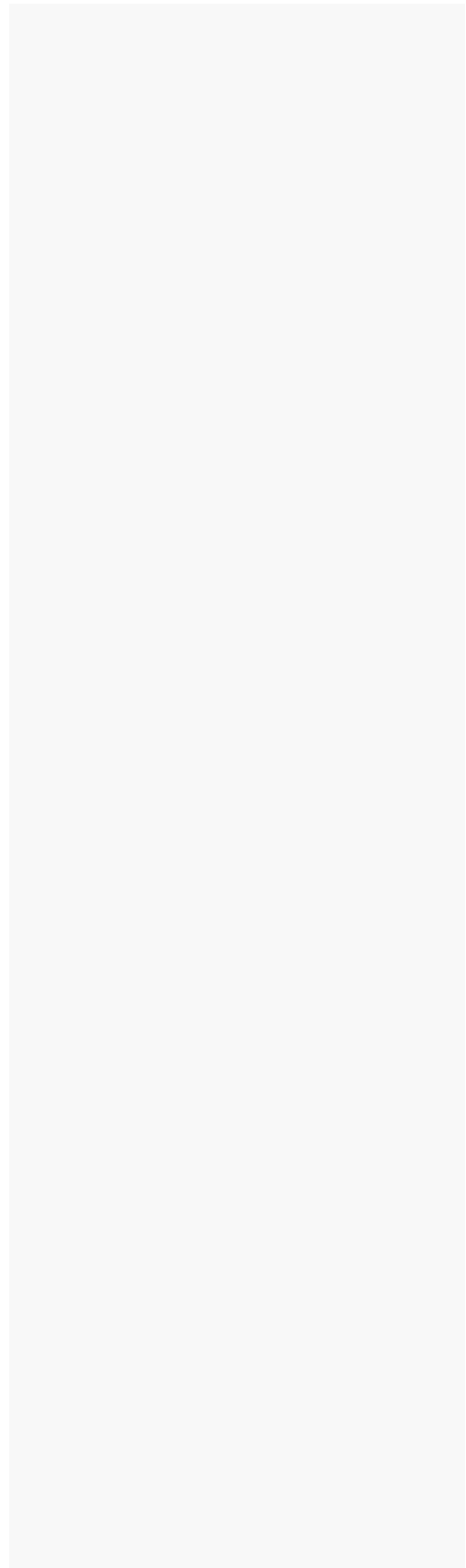
decor scanner, users can get a first impression of our decors and quickly order samples before placing an official order."

Decor harmony in one's own four walls

"Finding decors to match your own ideas was not easy until now," says Lukas. "For this problem, we developed the mood board tool. Whether it's shots of hiking in the Alps, vacationing in Tuscany, or Dali's burning giraffe, the app suggests matching decors from our range that pick up on both the colors and climate of the pictures." Entire rooms can thus be designed in the desired color mood according to individual needs.

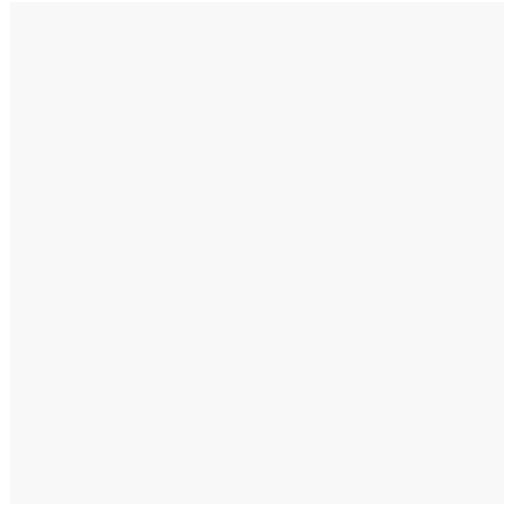
Planning efficiency and quick calculations

Planners and carpenters can use Pfleiderer's WoodPro furniture configurator to plan furniture efficiently, calculate easily and order materials quickly. Elements can be designed in detail as a 3D model with the software solution. An integrated plausibility check enables error-free work. For the visualizations, WoodPro accesses the entire article master data of Pfleiderer. In addition, craftsmen can use the application to quickly calculate quotations and network with suppliers as early as the planning phase.



About Pfleiderer– 125 years of high-quality wood-based panels

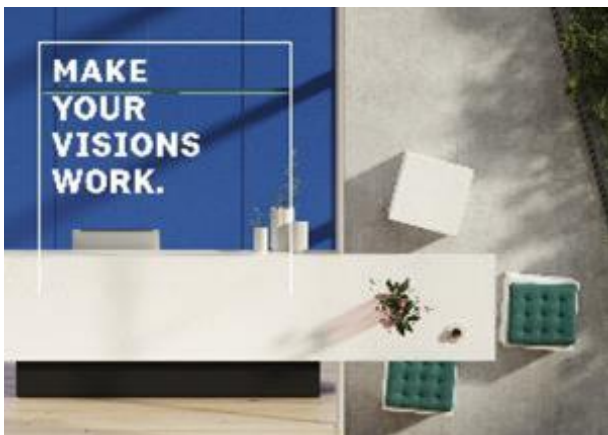
Pfleiderer is a leading wood-based panel manufacturer in Europe with annual sales of approx. 700 million euros and around 2,000 employees. The company has its headquarter in Neumarkt in der Oberpfalz (Germany). Pfleiderer has five production locations in Germany and one in Poland, and sales branches in England, the Netherlands, Switzerland, Romania and France. Pfleiderer offers a complete range of products and services with a focus on furniture making, the timber trade, interior fit out and timber construction. Pfleiderer pools the Duropal and Thermopal product ranges under the Pfleiderer umbrella brand and is a partner of industry, commerce, installers, designers and architects.



Pfleiderer Collection 2021 – 2024

All images may be used for free provided that the copyright holder is named: ©Pfleiderer

Key visuals for the new design collection 2021-2024



Caption:

Focused on customers and their ideas - the new Pfleiderer Collection 2021

Contact:

Pfleiderer Deutschland GmbH

Stefan Göldner

Phone: +49 - 5241 – 871-366

Mail: stefan.goeldner@pfleiderer.com

Diana Bachmeier

Phone: +49 - 9181 – 28 8739

Mail: diana.bachmeier@pfleiderer.com

GOOS COMMUNICATION

Susanne Jung

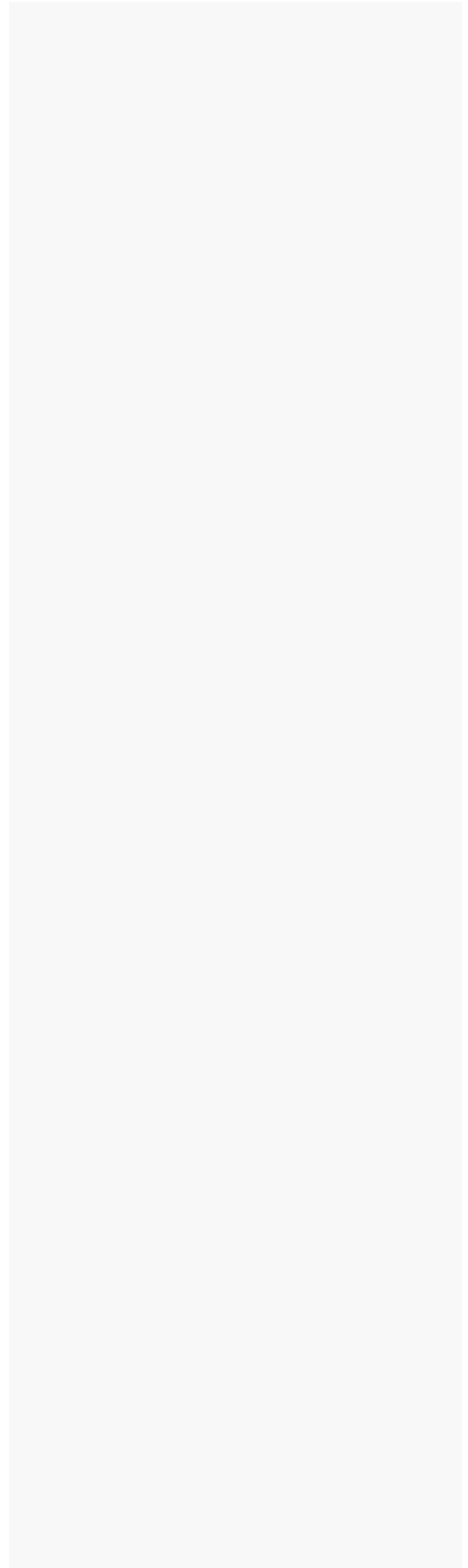
Phone: +49 - 40 – 284 17 87-45

Mail: pfleiderer@goos-communication.com

Images of the Express Collection from Pfleiderer



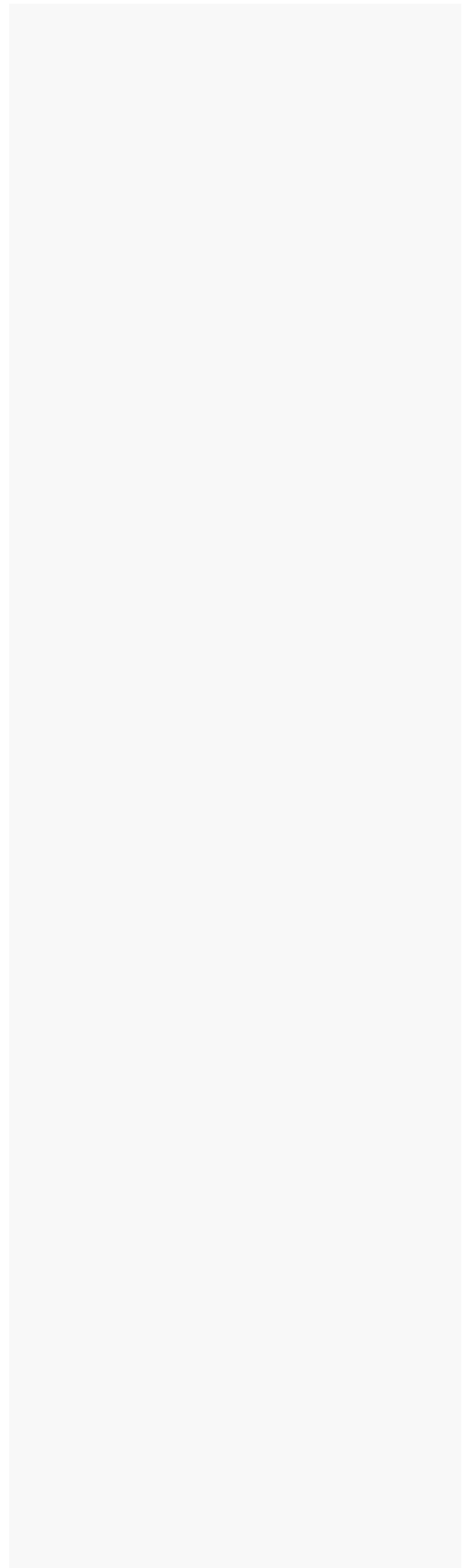
Caption:
Fast access to numerous high-quality and smart products from Pfleiderer - the new Express Collection



Images of FunXTional Products from Pfleiderer



Caption:
Product family with additional value - The FunXTional Products from Pfleiderer ensure elegant design with the highest demands on hygiene, practicality, durability and user-friendliness at the same time.



Images of XTerior compact from Pfliederer

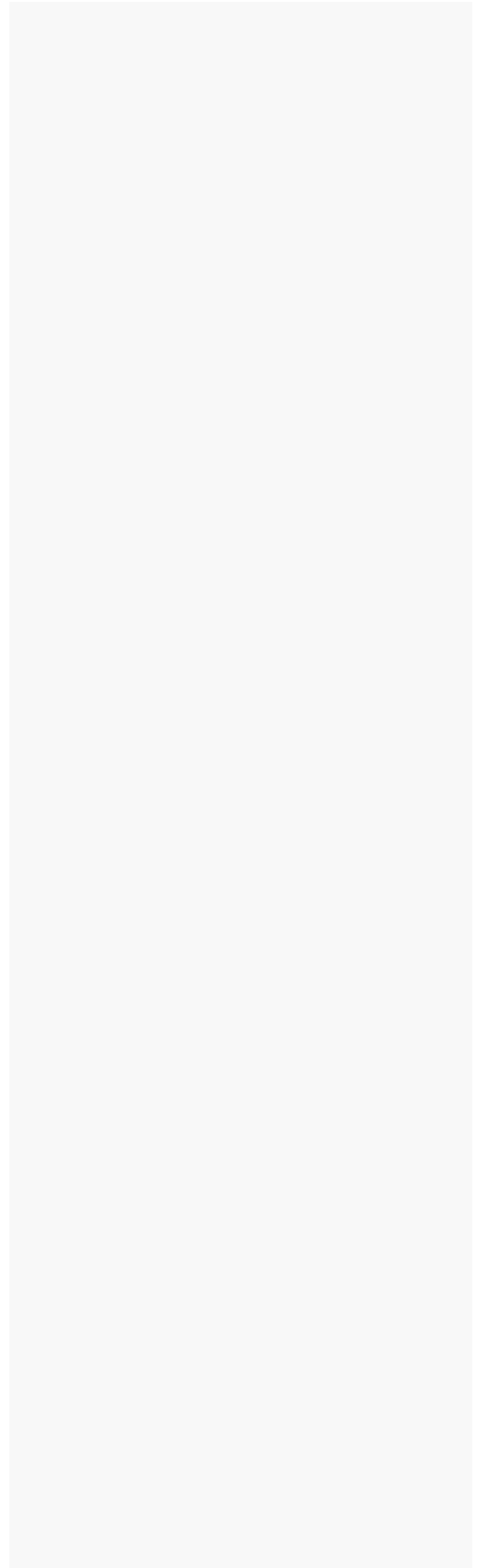


Caption:
For functional and aesthetic outdoor applications - XTerior compact gives shape to designs, protects the building fabric and provides pleasant comfort.

Images of sustainability from Pfleiderer



Caption:
Protect resources through circular economy - recycling and coupling raw materials prevent targeted tree felling for Pfleiderer panels.



Images of the digital services from Pfeiderer



Caption:
Design, plan and work with digital services from Pfeiderer - virtual experimental rooms, online planning tools and planning data support and accelerate day-to-day business.