

# FIRE PROTECTION

PRODUCT PROGRAMME  
2021–2024



**MAKE  
YOUR  
VISIONS  
WORK.**

MADE IN GERMANY

# MAKE YOUR VISIONS WORK.

Decor used:  
U17005 Carmine Red

## WOOD-BASED PANELS THAT OPEN UP NEW PERSPECTIVES.

From design to completed project, every step counts. After all, designs are only really appealing if they can also be realised. By choosing Pfleiderer, you're off to the right start. Aesthetic, functional and by design. In the 2021–2024 brochure, we introduce you to our extensive product range designed to make you more successful. Stylish, expressive and modern decors, innovative surface textures and core panels all come together perfectly to meet your technical, cost and user requirements. From high quality individual items to sector spanning concepts – you can turn your vision into reality with practical, high quality solutions from Pfleiderer.



Make work easier – with the Pfleiderer WorkApp! Simply scan decors with your smartphone, receive combination recommendations and request samples. Learn more at [workapp.pfleiderer.com](https://workapp.pfleiderer.com).



Our tip:  
scan the QR code  
and get started  
straight away.

<b>FIRE PROTECTION WITH PFLEIDERER</b>	<b>4</b>
<b>DST-SYSTEM</b>	<b>5</b>
<b>MADE IN GERMANY</b>	<b>6</b>
<b>SUSTAINABILITY</b>	<b>7</b>
<b>REFERENCES</b>	<b>8</b>
<b>SURFACE TEXTURES</b>	<b>10</b>
<b>CORE MATERIALS</b>	<b>12</b>
<b>CLASSIFICATION</b>	<b>13</b>
<hr/>	
<b>PRODUCTS</b>	
Raw panels	15
Melamine faced boards	16
High-pressure laminates (HPL)	19
Compact laminates and HPL bonded boards	20
Compact laminates for exterior use	25
<hr/>	
<b>EUROPEAN CLASSIFICATION</b>	<b>26</b>
<b>GLOSSARY</b>	<b>28</b>
<b>SERVICE</b>	<b>30</b>



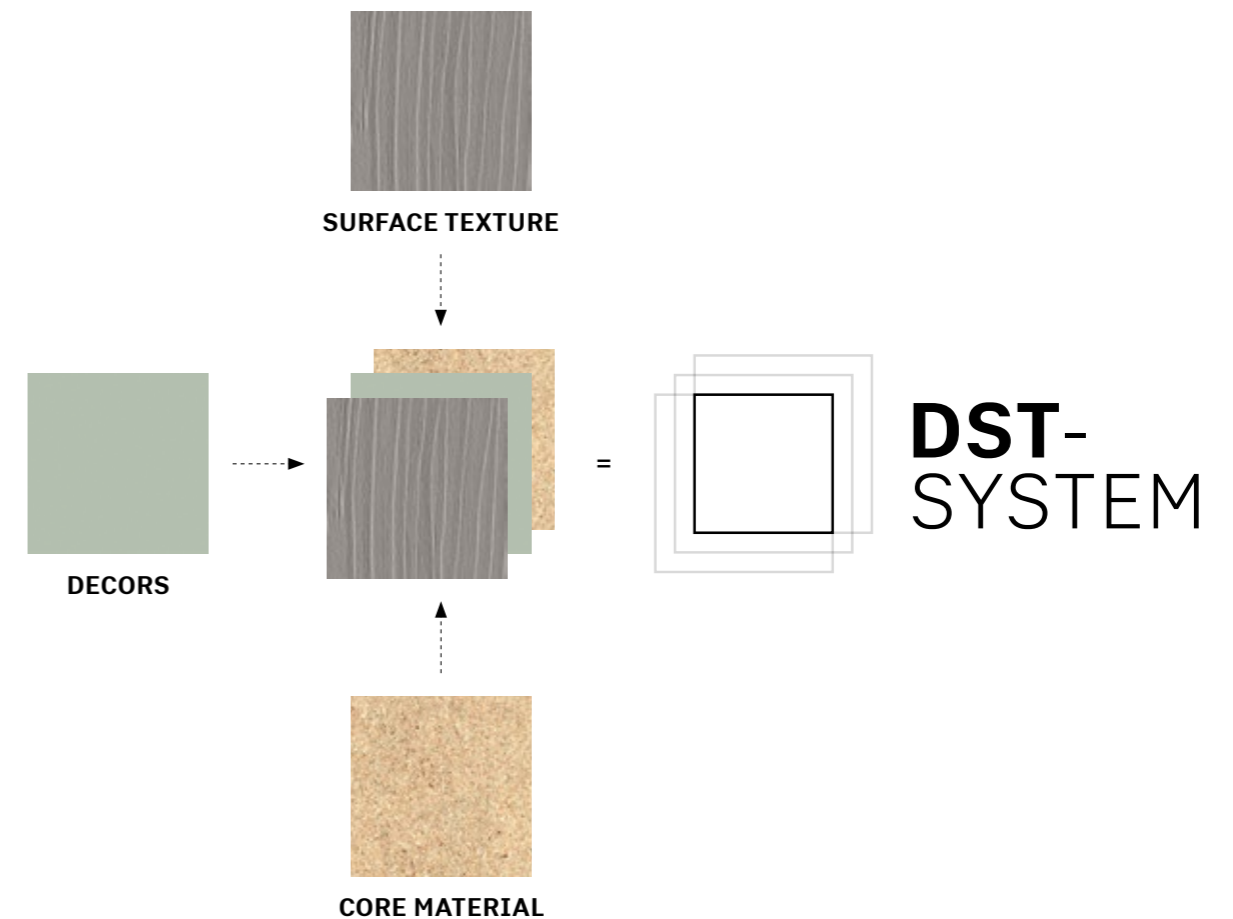
## BUILT-IN SAFETY: SOLUTIONS FOR FIRE PREVENTION

### Expert answers to complex questions.

The serious issue of constructional fire protection is always present, particularly in public buildings. The construction products have to be flame retardant or non-combustible, depending on their field of application, and must have valid proof of fire prevention testing.

The Pfleiderer fire protection range affords designers and architects a wide variety of design possibilities, while always putting safety first. Our tested and certified materials are available with different qualities to suit a range of interior design concepts from new builds to renovations. The DST system also allows the fire protection core panels to be combined with numerous decors and textures so that the special characteristics of the furniture and fittings do not show.

Social Medical Centre, Vienna  
© Michael Baumgartner KiTO



## DESIGN AND FUNCTION IN HARMONY

### Flexible choice of materials for individual solutions.

Whether you want to use a certain colour across a range of items, have to fulfil specific fire prevention regulations or need a surface that is easy to clean, the DST system from Pfleiderer can help you to realise coherent and functional designs: it offers numerous, technically tested and visually checked combination options of decors, surface textures and core panels for you to choose from. In addition, all the decors from the design collection are available both as HPL and DecoBoard. Find exactly what you need to realise your vision. We are also happy to provide you with individual advice on request!



Core materials for coating, which are available with the decors of the design collection such as the fire retardant Pyroex, moisture resistant P3, MDF or others can be found at [productfinder.pfleiderer.com](https://productfinder.pfleiderer.com).

MADE IN GERMANY

SUSTAINABILITY

## UNCOMPROMISINGLY GOOD: AT PFLEIDERER QUALITY HAS A SYSTEM

### You can rely on security and transparency.

Producing wood-based materials sustainably and in the highest quality is a challenge. As a leading company in the wood industry, Pflaiderer faces up to this challenge at all levels – and with traditional entrepreneurial diligence. With modern production sites, an integrated management system for quality, environment, energy and safety, and a corporate culture that continuously develops these values. Because for us, the compatibility of quality and sustainability is a matter of course!

In concrete terms, this means that we certify our processes throughout the entire value chain – often far beyond what is legally required. We attach great importance to being as transparent as possible for our customers and partners. Our environmental management systems at our locations are certified according to DIN ISO EN 14001 and ISO 50001. Also we belong to the Quality Association for Wood-based Panels and have certifications according to FSC® (License Code: FSC® C011773) and PEFC (License Code: PEFC/04-32-0828). And if you want to know more, just contact us. We will be happy to give you detailed information!

MADE IN GERMANY

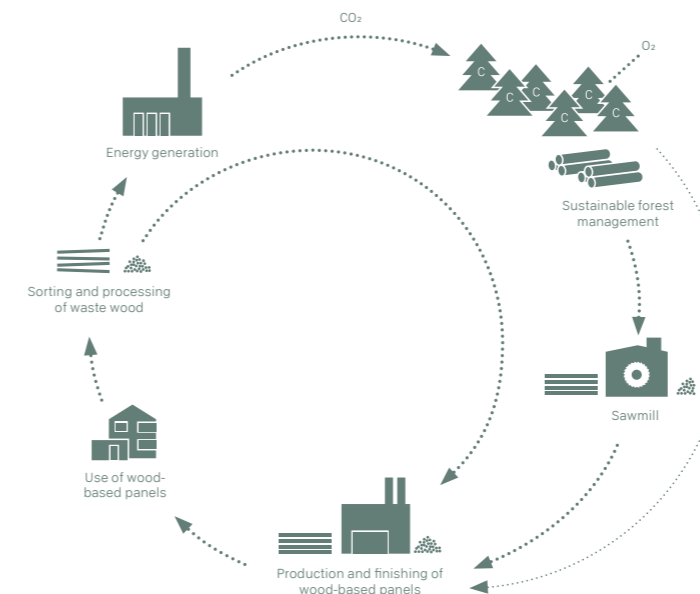
## DESIGNED FOR A FUTURE WORTH LIVING: SUSTAINABILITY AT PFLEIDERER

### Responsibility for tomorrow starts today.

Those who rely on wood as a raw material rightly expect an environmentally conscious “green” material. We at Pflaiderer want to do full justice to this and have therefore been offering an extensive range of low-emission and environmentally friendly products for many years. Sustainability – in addition to ecological, social and economic aspects – as well as careful use of natural resources is a permanent pillar of our corporate philosophy. Consistent recycling management and wood recycling ensure that no trees are felled for our products. Through regular independent evaluation of our procurement and production processes, we are able to ensure that we offer our customers the best possible service, manufacturing and logistics processes as well as a corporate culture of accountability. We ensure that you can use our products with a clear conscience and recommend them to your customers.

### A healthy full range of products.

Pflaiderer focuses on low-emission materials, e.g. F\*\*\*\* glued panels for interior design or LivingBoard with formaldehyde-free gluing. Many of our board materials have been awarded the Blue Angel for a healthy indoor climate for many years. At the beginning of 2020, we succeeded in obtaining this award – in addition to raw boards and directly coated products – also for large parts of the HPL range. This means that you can also fall back on a consistently sustainable full product range for demanding projects – and fulfil customer wishes without compromising on ecology and sustainability.



Through multi-stage wood utilisation (so-called cascade utilisation), wood recycling, and the use of forestry wood and industrial waste wood for high quality materials with a long service life, Pflaiderer conserves valuable resources and actively contributes to reducing carbon emissions, air, water and soil pollution and energy consumption. We control the wood mix individually, depending on the product, to achieve a perfect balance between quality requirements and resource conservation.



# REFERENCES



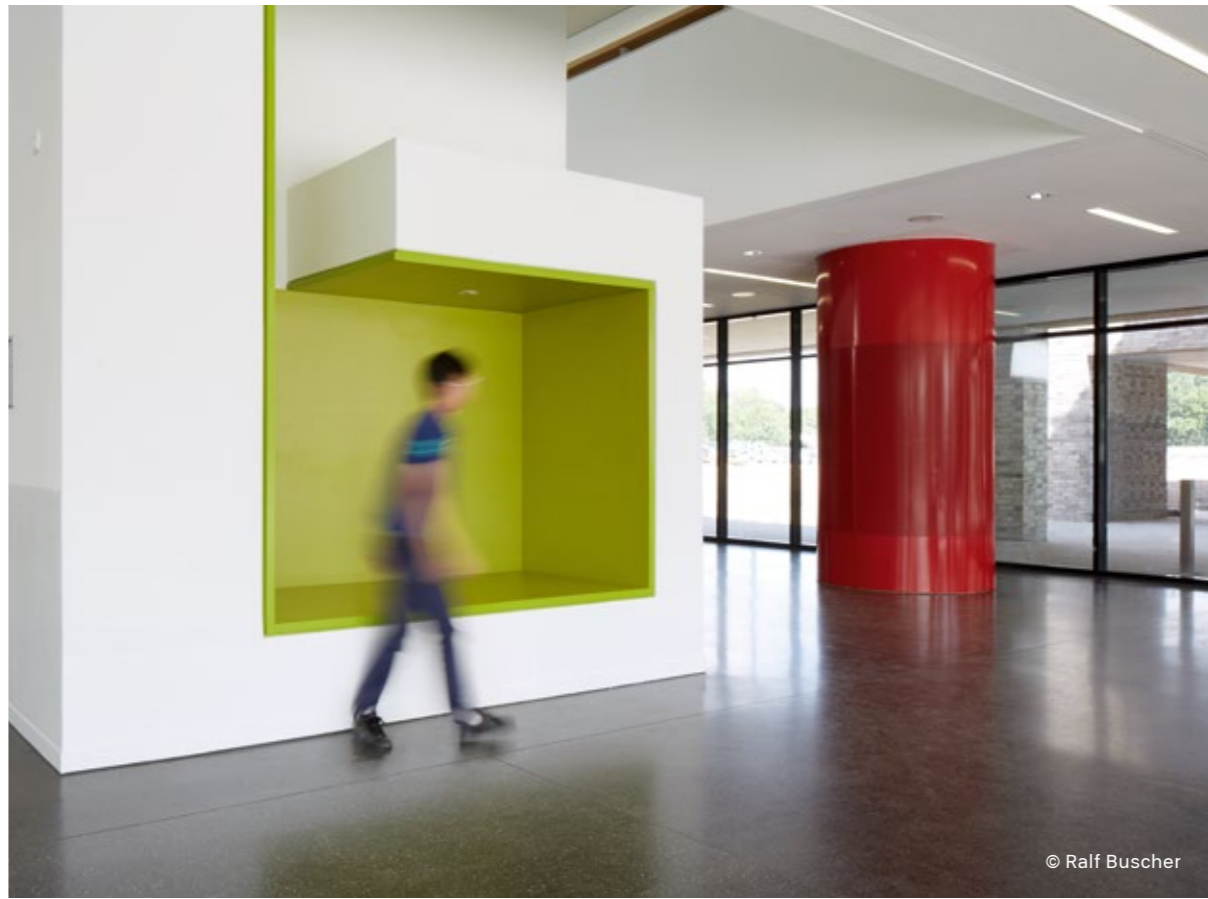
© Atelier Altenkirch

Erika Fuchs House, Schwarzenbach a. d. Saale

Social Medical Centre, Vienna



© Michael Baumgartner KiTO



© Ralf Buscher

The Erich Kästner Community School, Elmshorn

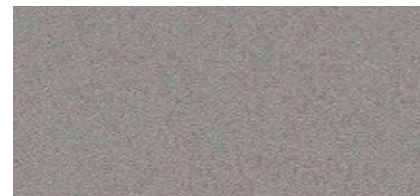
Town Library, Hanau



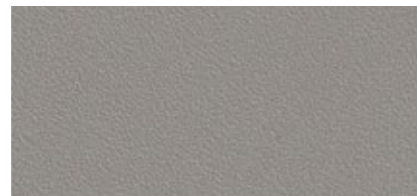
© Julia Schambeck, Munich

# SURFACE TEXTURES

## COLLECTION TEXTURES



**SD** Sandpearl HPL DB



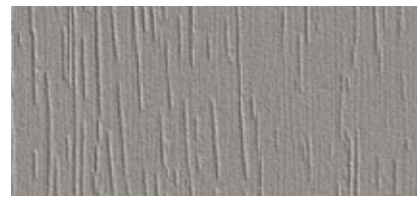
**VV** Top Velvet HPL DB



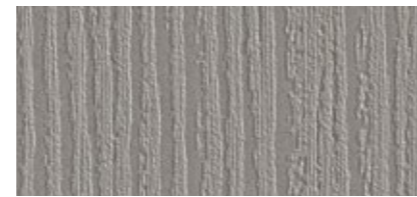
**MP** Miniperl HPL DB



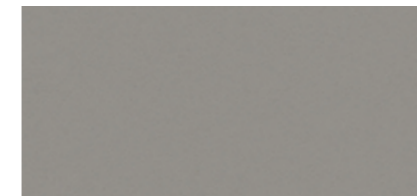
**MO** Montana HPL DB



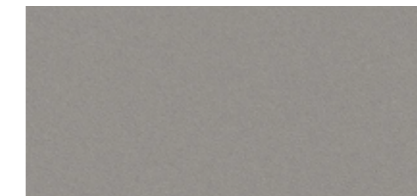
**NW** Natural Wood HPL DB



**RU** Rustic Wood HPL DB **RT** Rustic Wood HPL



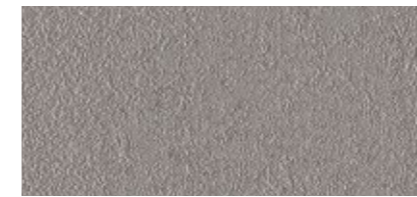
**HG** High Gloss HPL DB **HS** Enhanced High Gloss HPL



**ML** Matt Lacquer HPL DB



**SM** Semi matt HPL DB **MS** Enhanced Semi Matt HPL

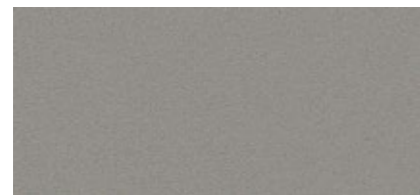


**CR** Corrosio HPL DB

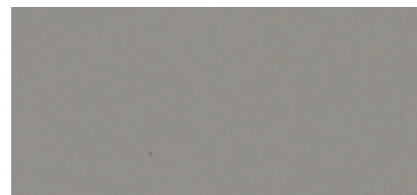


**SX** Stucotex HPL DB

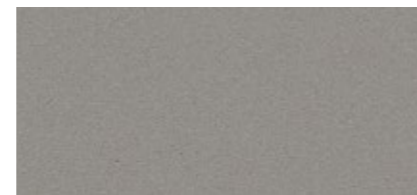
## FUNXTIONAL PRODUCTS



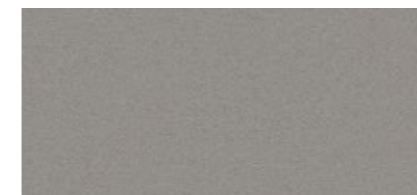
**XT** XTreme Matt PrimeBoard



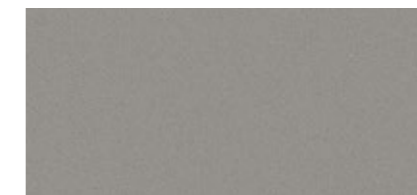
**XG** XTreme High Gloss PrimeBoard



**XMSM** XTreme Matt HPL



**XPSM** XTreme plus HPL



**EM** Exterior Matt XTerior

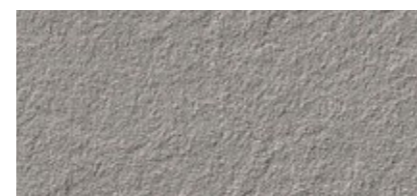
## ADDITIONAL STRUCTURES



**FG** Fine Grain HPL



**VO** Volcano HPL



**VE** Vermont HPL



**GR** Solid Granite HPL



**CO** Crocket HPL



**RC** Rustic HPL

Further information and technical details on our texture worlds and an overview about all available core materials can be found in our Workbook and at [pfleiderer.com](http://pfleiderer.com)

# DECORATIVE PANELS FOR A WIDE RANGE OF APPLICATIONS

## The Pfleiderer fire protection programme – Your range for integrating more planning security.

The Pfleiderer product portfolio for fire protection is created to bring design variety, technical and legal requirements together in the most diverse areas of application. The basis for this is provided by the wide range of core materials\*, which are available in a flame retardant Pyroex version.

Core Boards and products	Application	Raw panel	DecoBoard	PrimeBoard XTreme	Duropal Compact laminate	Duropal Element	Duropal Worktop
ClassicBoard P2		•	•	•		•	•
ClassicBoard P2 CARB2		•	•	•		•	•
ClassicBoard P2 F****		•	•	•		•	
ClassicBoard Hydrofuge MR							•
ClassicBoard P3		•	•	•		•	
PremiumBoard P2 ESA			•			•	
PremiumBoard Pyroex		•	•			•	
PremiumBoard Pyroex P4		•	•				
PremiumBoard Pyroex P6		•	•				
PremiumBoard MFP Hybrid		•	•			•	
PremiumBoard Birch multiplex						•	
PremiumBoard Poplar veneer CARB2						•	
StyleBoard MDF plus		•	•	•		•	
StyleBoard MDF black		•	•	•		•	
StyleBoard MDF.MR		•	•				
StyleBoard MDF Pyroex			•			•	
StyleBoard HDF		•	•				
Duropal HPL Compact, black / white / grey core					•		•
Duropal HPL Compact Pyroex, black core					•		
Duropal Compact XTreme plus, black / white / grey core					•		•
Duropal flameprotect compact					•		
Duropal XTerior compact					•		
Duropal XTerior compact F					•		

\* Some product varieties are available from stock, for others minimum quantities with delivery times must be observed and only a limited decor programme is available!

- Furniture and interior fitting
- Timber construction
- Fire protection
- Lightweight construction
- Packaging construction
- Doors
- Exterior use
- Storage technology



For more detailed information about the production varieties, please go to [productfinder.pfleiderer.com](https://productfinder.pfleiderer.com)



Detailed information on the available decors and structures can be found for the stock programmes in the decor table or with the respective decor at [decorfinder.pfleiderer.com](https://decorfinder.pfleiderer.com)

# CLASSIFICATION OF PFLEIDERER FIRE PROTECTION PRODUCTS

Pfleiderer fire protection product	Building inspection authority requirement	European class to EN 13501-1							Additional demand		
		non-combustible	flame retardant	A2-s1,d0	B-s1,d0	B-s2,d0	C-s1,d0	Cs2,d0	Bfl-s1/Cfl-s1	no / little smoke formation	no burning droplets
Duropal flameprotect compact		•		•						•	•
PremiumBoard Pyroex			•			•					•
PremiumBoard Pyroex P4			•			•					•
PremiumBoard Pyroex P6			•			•					•
DecoBoard Pyroex			•		•					•	•
DecoBoard Individual Motiv Pyroex			•				•				•
DecoBoard Pyroex P4			•		•			•		•	•
DecoBoard Pyroex P6			•		•			•		•	•
DecoBoard MDF Pyroex			•				•				•
Duropal HPL Pyroex*			•				•			•	•
Duropal HPL Individual Motiv Pyroex*			•				•			•	•
Duropal HPL Compact Pyroex, black core / Thickness < 8 mm			•				•				•
Duropal HPL Compact Pyroex, black core / Thickness ≥ 8 mm			•		•					•	•
Duropal Element Pyroex			•				•				•
Duropal Element MDF Pyroex			•				•				•
Duropal XTerior compact F – single-sided lacquering		•		•						•	•

\* Attention – HPL bonded boards may have a different classification depending on core material and glue used.

# PFLEIDERER FIRE PROTECTION PROGRAMME

Raw panels  
Melamine faced boards  
High-pressure laminates (HPL)  
Compact laminates and flat bonded elements  
Compact laminates for exterior use

Decor used:  
U17008 Ruby Red

## RAW WOOD BASED PANELS PARTICLEBOARDS

### PremiumBoard Pyroex



Flame resistant particleboard, suitable for non load-bearing purposes in dry areas, for interior fitting and for furniture subject to higher demands on fire protection.

#### AREAS OF APPLICATION



This panel type combines all the advantages of particleboard (high strength, above-average durability, easy to process, wide range of decorative lamination possibilities) with additional safety in the event of a fire. Through the addition of flame retardants, the burning rate of the raw particleboards is reduced, thus significantly increasing the fire resistance and delaying the "flash-over point". The primary areas of application are interior fitting of rooms with high fire risk (laboratories, fuel station sales offices, TV studios). The high dimensional accuracy of the tongue-and-groove joint guarantees an optimum fit and level, flush laying.

#### PRODUCT FEATURES



<b>Reaction to fire</b>	Flame retardant B-s2,d0 (EN 13501-1)
<b>Formaldehyde emission class</b>	E1 E05
<b>Note</b>	FSC certification or PEFC certification available on request.

#### FORMAT IN MM

Length	Width	Thickness
2,655	2,100	10   13   16   18   19   22   25   28   38
5,310	2,100	10   13   16   18   19   22   25   28   38

#### FLOORPANELS: FORMAT IN MM

(OVERALL DIMENSIONS INCL. TONGUE)		NUMBER PER PACKAGE / THICKNESS							
Length	Width	10	13	16	19	22	25	28	38
1,760	690	80	60	50	40	35	32	30	20



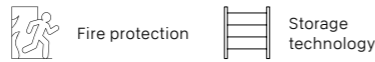


## PremiumBoard Pyroex P4



Wood particleboard type P4 in accordance with EN 312, for structural purposes for use in dry conditions, flame resistant.

### AREAS OF APPLICATION



### PRODUCT FEATURES



<b>Product-type</b>	P4
<b>Reaction to fire</b>	Flame retardant B-s2,d0 (EN 13501-1)
<b>EC scope</b>	EN 13986:2004 +A1:2015 Load-bearing boards for use in dry conditions.
<b>Formaldehyde emission class</b>	E1 E05
<b>Note</b>	FSC certification or PEFC certification available on request.
<b>Minimum quantity</b>	From a minimum order quantity of 100 m <sup>3</sup> . Other formats and thicknesses available on request.

### FORMAT IN MM

Length	Width	Thickness
5,310	2,100	38
5,600	2,100	38

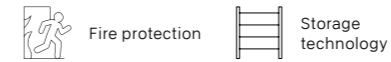


## PremiumBoard Pyroex P6



Wood particleboard type P6 in accordance with EN 312, heavy-duty, for structural purposes for use in dry conditions, flame resistant.

### AREAS OF APPLICATION



### PRODUCT FEATURES



<b>Product-type</b>	P6
<b>Reaction to fire</b>	Flame retardant B-s2,d0 (EN 13501-1)
<b>EC scope</b>	EN 13986:2004 +A1:2015 Heavy duty load-bearing boards for use in dry conditions.
<b>Formaldehyde emission class</b>	E1 E05
<b>Note</b>	FSC certification or PEFC certification available on request.
<b>Minimum quantity</b>	From a minimum order quantity of 100 m <sup>3</sup> . Other formats and thicknesses available on request.

### FORMAT IN MM

Length	Width	Thickness
5,310	2,100	38
5,600	2,100	38



## DecoBoard Pyroex



Flame resistant particleboard with decorative melamine resin facing on both faces, awarded with the Blue Angel.

### AREAS OF APPLICATION



Preventive fire protection in the decorative sector. For interior fitting as wall and ceiling coverings, installations, room dividers and furniture, in industrial and administrative buildings, schools, sports and festival halls, hotels and care facilities.

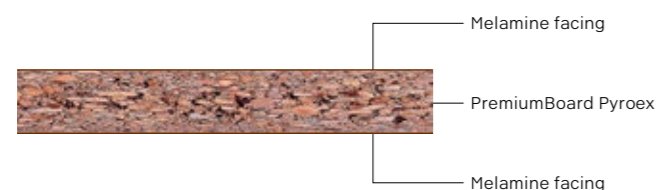
### PRODUCT FEATURES



<b>Product standard</b>	EN 14322
<b>Core material</b>	PremiumBoard Pyroex Flame resistant particleboard, suitable for non load-bearing purposes in dry areas, for interior fitting and for furniture subject to higher demands on fire protection.
<b>Reaction to fire</b>	Flame retardant B-s1,d0 (EN 13501-1)
<b>Formaldehyde emission class</b>	E1 E05
<b>Antimicrobial effect</b>	Surface with antimicrobial effect in 24 h for interior fit-out and finishes – Test Methodology JIS Z 2801 / ISO 22196
<b>Note</b>	FSC certification or PEFC certification available on request.

### FORMAT IN MM

Length	Width	Thickness
2,655	2,100	10   13   16   18   19   22   25   28   38
2,800	2,100	16   19
5,310	2,100	10   13   16   18   19   22   25   28   38
5,600	2,100	16   19

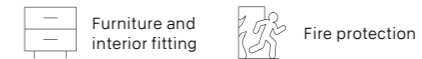


## DecoBoard Individual Motiv Pyroex



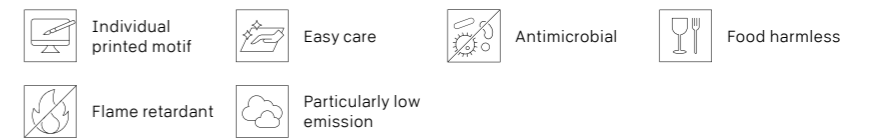
Flame resistant particleboard with individual digital print motifs in direct facing method, awarded with the Blue Angel. The front face is printed as required, the standard reverse is white.

### AREAS OF APPLICATION



Preventive fire protection for individual furniture and interior fitting elements, wall fittings and partitions, shopfitting, trade fair stands, boat-building, caravans, hotels, spas, medical centres, offices and living spaces. You will find the right, individually tailored product for every requirement notably if special low emissions are needed. Not suitable for horizontal surfaces and or surfaces exposed to mechanical loads.

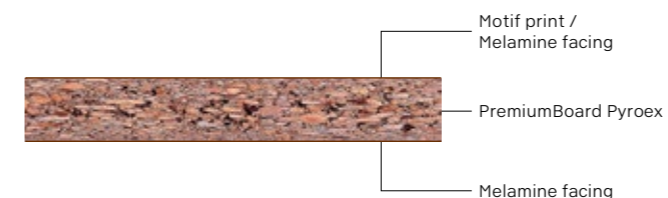
### PRODUCT FEATURES



<b>Product standard</b>	In accordance with EN 14322
<b>Core material</b>	PremiumBoard Pyroex Flame resistant particleboard, suitable for non load-bearing purposes in dry areas, for interior fitting and for furniture subject to higher demands on fire protection.
<b>Reaction to fire</b>	Flame retardant C-s2,d0 (EN 13501-1)
<b>Formaldehyde emission class</b>	E1 E05
<b>Antimicrobial effect</b>	Surface with antimicrobial effect in 24 h for interior fit-out and finishes – Test Methodology JIS Z 2801 / ISO 22196
<b>Note</b>	Maximum motif format per board, incl. overprinting: 2,750 x 2,030 mm. Larger motifs can be tiled. Cut to size is not available. FSC certification or PEFC certification available on request.

### FORMAT IN MM

Length	Width	Thickness
2,800	2,100	16   19

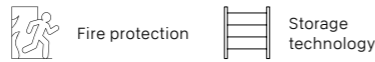


## DecoBoard Pyroex P4



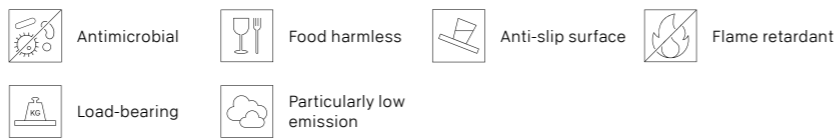
Wood particleboard type P4 in accordance with EN 312, for structural purposes for use in dry conditions, melamine faced on both sides, flame resistant.

### AREAS OF APPLICATION



DecoBoard Pyroex P4 combines all the advantages of a structural particleboard with additional safety in case of fire. By adding flame retardants, the burn-through rate of the raw particleboards is reduced, as a result of which, the full development of the fire is delayed and in certain circumstances a fire is even prevented. Ideally suitable for shelving and racking, in combination with the skidproof texture and particular product lay-up, DecoBoard Pyroex P4 achieves slip resistance rating R10 and abrasion resistance class AC4 on its top face.

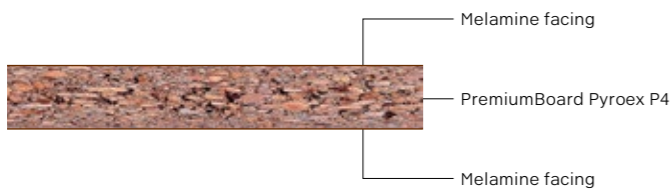
### PRODUCT FEATURES



<b>Product standard</b>	EN 14322
<b>Core material</b>	PremiumBoard Pyroex P4 Wood particleboard type P4 in accordance with EN 312, for structural purposes for use in dry conditions, flame resistant.
<b>Reaction to fire</b>	Flame retardant Bfl-s1, Cfl-s1, B-s1,d0 (EN 13501-1)
<b>EC scope</b>	EN 13986:2004 +A1:2015 Load-bearing boards for use in dry conditions.
<b>Formaldehyde emission class</b>	E1 E05
<b>Antimicrobial effect</b>	Surface with antimicrobial effect in 24 h for interior fit-out and finishes – Test Methodology JIS Z 2801 / ISO 22196
<b>Note</b>	FSC certification or PEFC certification available on request.
<b>Minimum quantity</b>	From a minimum order quantity of 100 m <sup>3</sup> . Other formats and thicknesses available on request.

### FORMAT IN MM

Length	Width	Thickness
5,310	2,100	38
5,600	2,100	38

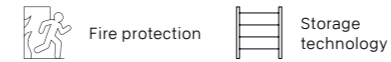


## DecoBoard Pyroex P6



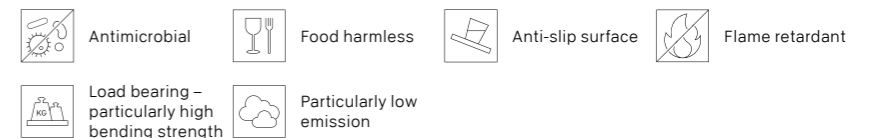
Wood particleboard type P6 in accordance with EN 312, heavy-duty, for structural purposes for use in dry conditions, melamine faced on both sides, flame resistant.

### AREAS OF APPLICATION



DecoBoard Pyroex P6 combines all the advantages of a structural particleboard with additional safety in case of fire. By adding flame retardants, the burn-through rate of the raw particleboards is reduced, as a result of which, the full development of the fire is delayed and in certain circumstances a fire is even prevented. Ideally suitable for shelving and racking, in combination with the skidproof texture and particular product lay-up, DecoBoard Pyroex P6 achieves slip resistance rating R10 and abrasion resistance class AC4 on its top face.

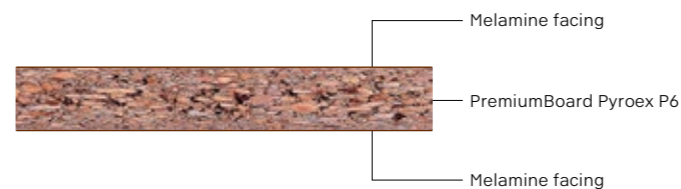
### PRODUCT FEATURES



<b>Product standard</b>	EN 14322
<b>Core material</b>	PremiumBoard Pyroex P6 Wood particleboard type P6 in accordance with EN 312, heavy-duty, for structural purposes for use in dry conditions, flame resistant.
<b>Reaction to fire</b>	Flame retardant Bfl-s1, Cfl-s1, B-s1,d0 (EN 13501-1)
<b>EC scope</b>	EN 13986:2004 +A1:2015 Heavy duty load-bearing boards for use in dry conditions.
<b>Formaldehyde emission class</b>	E1 E05
<b>Antimicrobial effect</b>	Surface with antimicrobial effect in 24 h for interior fit-out and finishes – Test Methodology JIS Z 2801 / ISO 22196
<b>Note</b>	FSC certification or PEFC certification available on request.
<b>Minimum quantity</b>	From a minimum order quantity of 100 m <sup>3</sup> . Other formats and thicknesses available on request.

### FORMAT IN MM

Length	Width	Thickness
5,310	2,100	38
5,600	2,100	38



## DecoBoard MDF Pyroex



Flame resistant, medium-density fibreboard with uniform layers and decorative melamine resin facing on both sides.

### AREAS OF APPLICATION



Wherever high demands are made on fire protection – flame resistant – and on the edge quality – for profiling and lacquering. Such as for furniture and shelving in shop fitting and interior design.

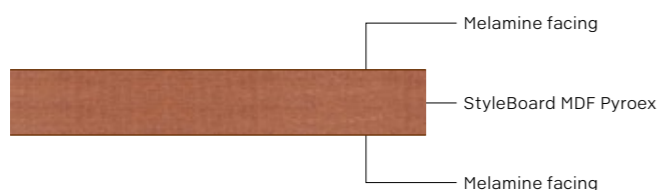
### PRODUCT FEATURES



<b>Product standard</b>	EN 14322
<b>Core material</b>	StyleBoard MDF Pyroex Flame resistant, medium-density fibreboard (MDF) according to EN 622-1, with uniform structure and outstanding surface stability.
<b>Reaction to fire</b>	Flame retardant C-s2,d0 (EN 13501-1)
<b>Formaldehyde emission class</b>	E1 E05 CARB Phase 2 / TSCA Title VI
<b>Antimicrobial effect</b>	Surface with antimicrobial effect in 24 h for interior fit-out and finishes – Test Methodology JIS Z 2801 / ISO 22196
<b>Note</b>	FSC certification or PEFC certification available on request.

### FORMAT IN MM

Length	Width	Thickness
2,800	2,100	16   19
5,600	2,100	16   19



## Duropal HPL Pyroex



Decorative high-pressure laminate in flame retardant quality according to EN 438-3:HGF/VGF, with robust melamine resin surface and sanded reverse.

### AREAS OF APPLICATION



Flame retardant surface material for walls and doors, furniture and installations in public buildings and special constructions, such as railway stations and airports, retail and recreational facilities, public areas, hotels, schools, care home facilities and hospitals.

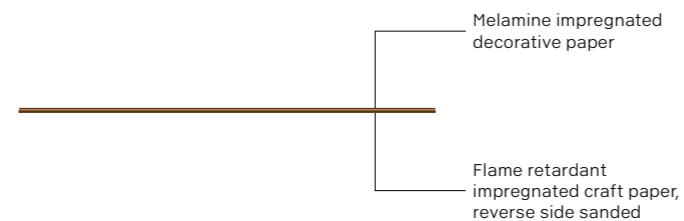
### PRODUCT FEATURES



<b>Product standard</b>	EN 438-3
<b>Reaction to fire</b>	Flame retardant C-s1,d0 (EN 13501-1) Depending on the core material and adhesive used, HPL flat bonded elements may have a different classification. We recommend the use of the product Duropal Element Pyroex.
<b>Formaldehyde emission class</b>	E1 E05
<b>Antimicrobial effect</b>	Surface with antimicrobial effect in 24 h for interior fit-out and finishes – Test Methodology JIS Z 2801 / ISO 22196
<b>Density</b>	Min. 1,350 kg/m <sup>3</sup> (EN ISO 1183-1)
<b>Note</b>	FSC certification or PEFC certification available on request.

### FORMAT IN MM

Length	Width	Thickness
2,800	2,070	0.8   1.2



## Duropol HPL Individual Motiv Pyroex



High-pressure laminate in flame retardant quality with individual digital printed motifs in accordance with EN 438-3:HGF/VGF. The reverse is sanded ready for gluing. Our well-known Individual world from just 1 piece upwards, where your image files can be used as a motif.

### AREAS OF APPLICATION



Flame retardant surface material for the trade fair, shop and event sector, for public buildings and special constructions, hotels, schools, doctors' surgeries and clinics. Whenever special demands are made on the individual design, the ease of care or durability in addition to the constructional fire protection.

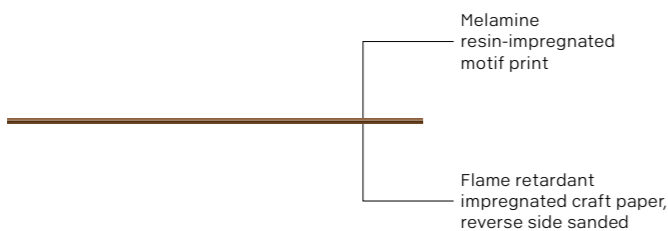
### PRODUCT FEATURES



<b>Product standard</b>	In accordance with EN 438-3
<b>Reaction to fire</b>	Flame retardant C-s1,d0 (EN 13501-1) Depending on the core material and adhesive used, HPL flat bonded elements may have a different classification. We recommend the use of the product Duropol Element Pyroex.
<b>Formaldehyde emission class</b>	E1 E05
<b>Antimicrobial effect</b>	Surface with antimicrobial effect in 24 h for interior fit-out and finishes – Test Methodology JIS Z 2801 / ISO 22196
<b>Density</b>	Min. 1,350 kg/m <sup>3</sup> (EN ISO 1183-1)
<b>Note</b>	Maximum motif format per board, incl. overprinting: 2,750 x 2,030 mm. Larger motifs can be tiled. Cut to size is not available. Colour differences can occur in follow-up production lots. FSC certification or PEFC certification available on request.

### FORMAT IN MM

Length	Width	Thickness
2,800	2,070	1.2

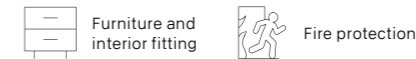


## Duropol HPL Compact Pyroex, black core



Compact high-pressure laminate in flame retardant quality according to EN 438-4:CGF. With uniform black-coloured core and decorative melamine resin surface on both sides.

### AREAS OF APPLICATION



Preventive fire protection in interior design, for damp and wet areas and wherever outstanding durability of the material is demanded, e.g. as wall protection. Also for furniture and installation elements, particularly when low material cross-sections or open edge solutions are required as part of fire protection concepts.

### PRODUCT FEATURES



<b>Product standard</b>	EN 438-4
<b>Core material</b>	Flame retardant compact laminate black core Uniform black through-pigmented solid compact laminate core, suitable for applications with high requirements for the surface spread of flame.
<b>Reaction to fire</b>	Flame retardant C-s2,d0 (EN 13501-1): 2,800 x 2,070 x 4 – 6 mm, 5,600 x 2,070 x 4 – 6 mm B-s1,d0 (EN 13501-1): 2,800 x 2,070 x 8 – 15 mm, 5,600 x 2,070 x 8 – 13 mm
<b>EC scope</b>	EN 438-7:2005 Compact laminate intended for internal wall and ceiling finishes (including suspended ceilings)
<b>Formaldehyde emission class</b>	E1 E05
<b>Antimicrobial effect</b>	Surface with antimicrobial effect in 24 h for interior fit-out and finishes – Test Methodology JIS Z 2801 / ISO 22196
<b>Density</b>	Min. 1,350 kg/m <sup>3</sup> (EN ISO 1183-1)
<b>Note</b>	FSC certification or PEFC certification available on request.

### FORMAT IN MM

Length	Width	Thickness
2,800	2,070	4   5   6   8   10   12   13   15
5,600	2,070	4   5   6   8   10   12   13



## Duropol flameprotect compact



Non-combustible fire protection panel of primarily mineral constituents with uniform white-coloured core and decorative melamine resin surface on both sides in accordance with EN 438-4.

### AREAS OF APPLICATION



For universal use in preventive fire protection to reduce the spread of flame. Particularly useful where non-flammable materials are required and high demands are made on the design and ease of care. The area of application covers decorative interior fitting as furniture, installations and wall coverings in corridors and stairways (escape routes) in standard buildings, but also for higher demands in special buildings such as high-rise apartment blocks, large office buildings, hospitals, care facilities, schools, day nurseries, hotels, sales rooms and public areas, etc. Use in wet areas and outdoors, as well as mechanical surface stress, is not recommended.

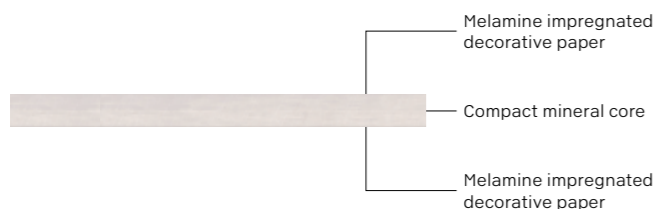
### PRODUCT FEATURES



<b>Product standard</b>	In accordance with EN 438-4
<b>Core material</b>	Mineral compact laminate Compact core of primarily mineral constituents with outstanding strength properties. Suitable for areas subject to particularly high demands of fire protection.
<b>Reaction to fire</b>	Non-combustible A2-s1,d0 (EN 13501-1)
<b>Formaldehyde emission class</b>	E1 E05
<b>Density</b>	1,900 kg/m <sup>3</sup> ± 50 kg/m <sup>3</sup> (EN ISO 1183-1)
<b>Note</b>	Please comply with information for the Duropol flameprotect compact collection at <a href="http://www.pfleiderer.com">www.pfleiderer.com</a> .

### FORMAT IN MM

Length	Width	Thickness
2,800	2,070	4   6   7   8   10   12   13   15

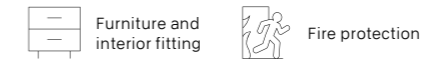


## Duropol Element Pyroex



Flame retardant HPL bonded board consisting of a particleboard with improved flame resistance, surfaced on both sides with Duropol HPL Pyroex.

### AREAS OF APPLICATION



Wherever high demands are made on quality and durability in addition to preventive fire protection in decorative interior design. For wall coverings, installations and interior furnishing in industrial, sales and administration buildings, in recreational facilities and public areas, such as schools, sports and festival halls, cinemas, discotheques, hotels, hospitals and care home facilities.

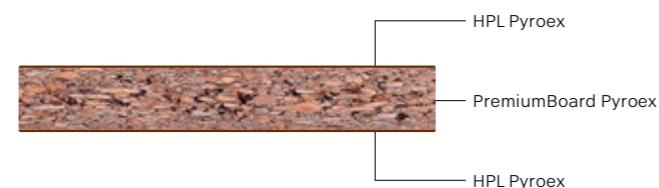
### PRODUCT FEATURES



<b>Product standard</b>	EN 13894-1
<b>Core material</b>	PremiumBoard Pyroex Flame resistant particleboard, suitable for non load-bearing purposes in dry areas, for interior fitting and for furniture subject to higher demands on fire protection.
<b>Reaction to fire</b>	Flame retardant C-s2,d0 (EN 13501-1)
<b>EC scope</b>	EN 438-7:2005 HPL composite panel intended for internal wall and ceiling finishes (including suspended ceilings)
<b>Formaldehyde emission class</b>	E1 E05
<b>Antimicrobial effect</b>	Surface with antimicrobial effect in 24 h for interior fit-out and finishes – Test Methodology JIS Z 2801 / ISO 22196
<b>Note</b>	FSC certification or PEFC certification available on request.

### FORMAT IN MM

Length	Width	Thickness
2,800	2,070	17.6   20.6



## Duropol Element MDF Pyroex



Flame retardant HPL bonded board consisting of a medium-density fibreboard (MDF) with uniform structure to EN 622-1, surfaced on both sides with Duropol HPL Pyroex.

### AREAS OF APPLICATION



Wherever a durable, outstanding surface quality – for profiling and lacquering – is required in conjunction with improved fire protection: For furnishings and installations in sales and recreational facilities, public buildings, special buildings and public areas, also in the trade fair and event sector.

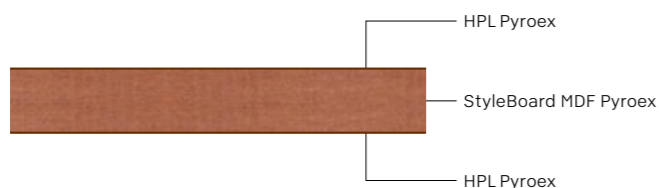
### PRODUCT FEATURES



<b>Product standard</b>	EN 13894-1
<b>Core material</b>	StyleBoard MDF Pyroex Flame resistant, medium-density fibreboard (MDF) according to EN 622-1, with uniform structure and outstanding surface stability.
<b>Reaction to fire</b>	Flame retardant C-s2,d0 (EN 13501-1)
<b>EC scope</b>	EN 438-7:2005 HPL composite panel intended for internal wall and ceiling finishes (including suspended ceilings)
<b>Formaldehyde emission class</b>	E1 E05 CARB Phase 2 / TSCA Title VI
<b>Antimicrobial effect</b>	Surface with antimicrobial effect in 24 h for interior fit-out and finishes – Test Methodology JIS Z 2801 / ISO 22196
<b>Note</b>	FSC certification or PEFC certification available on request.

### FORMAT IN MM

Length	Width	Thickness
2,800	2,070	17.6   20.6

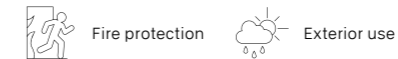


## Duropol XTerior compact F – single-sided lacquering



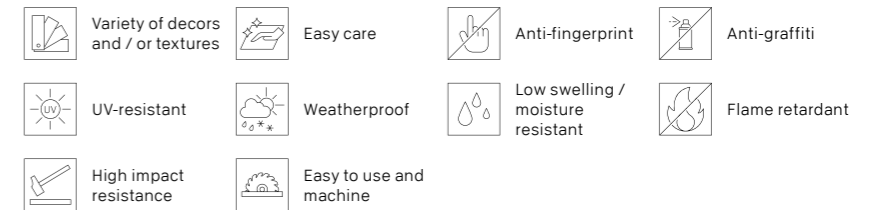
Compact high-pressure laminate for outdoor use in flame retardant quality according to EN 438-6:EDF / intensive decors according to EN 438-6:EGF. With uniform black-coloured core and single-sided decorative acrylic lacquer on the top side and decorative melamine resin surface on the reverse.

### AREAS OF APPLICATION



Duropol XTerior compact F fulfils the highest UV resistance requirements for the surface and due to its preventive fire protection, the high mechanical strength values and design freedom it is suitable for outdoor use, e.g. as facade, garden furniture, privacy screens, roof undersides, balconies or playground equipment. Especially if high standards of robustness, weather resistance and easy cleaning are required.

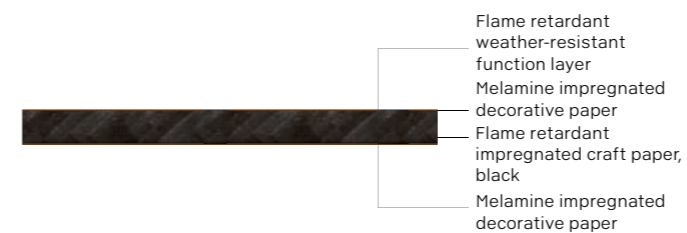
### PRODUCT FEATURES



<b>Product standard</b>	EN 438-6
<b>Core material</b>	Flame retardant compact laminate black core Uniform black through-pigmented solid compact laminate core, suitable for applications with high requirements for the surface spread of flame.
<b>Reaction to fire</b>	Flame retardant B-s1,d0 (EN 13501-1)
<b>EC scope</b>	EN 438-7:2005 Compact laminate panels/sidings for exterior wall and ceiling finishes (including suspended ceilings)
<b>Formaldehyde emission class</b>	E1 E05
<b>Density</b>	Min. 1,350 kg/m <sup>3</sup> (EN ISO 1183-1)
<b>Note</b>	FSC certification or PEFC certification available on request.

### FORMAT IN MM

Length	Width	Thickness
2,800	2,070	8   10   12   13



# EUROPEAN CLASSIFICATION OF CONSTRUCTION MATERIALS ACCORDING TO THEIR FIRE BEHAVIOUR

EN 13501-1 is recognised throughout Europe as the standard for the classification of the fire behaviour of construction materials. The classes listed in EN 13501-1 correspond to the following building inspection authority requirements and additional demands with respect to smoke development and burning droplets:

Building inspection authority requirement	Additional demand: no / little smoke formation	Additional demand: no burning droplets	European class to EN 13501-1
Non-combustible construction materials	•	•	A1
	•	•	A2-s1, d0
Flame retardant construction materials	•	•	B/C-s1, d0
		•	A2-s2/s3, d0
		•	B-s2/s3, d0
		•	C-s2/s3, d0
	•		A2-s1, d1/d2
	•		B-s1, d1/d2
	•		C-s1, d1/d2
Normally flammable construction materials		•	A2/B/C-s3, d2
		•	D-s1/s2/s3, d0
		•	E
			D-s1/s2/s3, d1
			D-s1/s2/s3, d2
Highly flammable construction materials			E-d2
			F

## EXPLANATION OF THE ABBREVIATIONS

Abbreviation	Criterion	Field of application
s	smoke	Demands with respect to smoke development
d	droplets	Demands with respect to burning droplets





# TERMS RELATED TO STRUCTURAL FIRE PROTECTION

<b>CE Declaration of performance</b>	For construction products which must fulfil a harmonious standard or a European technical value, declarations of performance in accordance with construction product regulations (BauPVO) have been created. With this declaration of performance, the manufacturer undertakes responsibility for the conformity of the building products with the declaration of performance. Only products for which a declaration of performance exists can use the CE marking.
<b>CE marking</b>	The CE marking (CE stands for Communauté Européenne = French for European Community) is a marking under EU law related to product safety. Attachment of the CE marking is obligatory on those construction products for which the manufacturer has drawn up a declaration of performance and accordingly stands for the conformity of the product with the declared performance.
<b>Construction components</b>	Elements, also called structural members, are parts of structures made of construction materials, for example, walls, columns, ceilings, floors, stairs, windows, doors, etc. Elements are classified in fire resistance classes (fire ratings) according to their reaction to fire.
<b>Construction materials</b>	Construction materials are all materials used for the production of buildings, structures and elements and for the fit-out and finishes, for which fire behaviour requirements are set (e.g. for external walls, internal walls, roofings, floorings, pipes, etc.). In the legal context, construction materials are called construction products.
<b>Construction products</b>	Construction materials, components and installations that are permanently installed in structures. Instead of the terms "construction materials" and "components", in the European classification standards on fire behaviour or reaction to fire, the term "construction products" is also used.
<b>Fire compartment</b>	Fire compartments are areas of buildings and structures, which are separated from each other by separating elements (walls, ceilings, doors) with defined fire resistance.
<b>Fire load</b>	The fire load is the sum of all flammable construction materials and all other flammable materials located in a building.
<b>Fire protection</b>	All measures that prevent the ignition and spread of a fire and enable the rescue of people and animals and effective firefighting work. They are divided into structural, system-related, organisational and defensive fire protection measures.
<b>Fire resistance (fire rating)</b>	The fire resistance (fire rating) indicates for how long (in minutes) an element retains its characteristic performance properties under defined fire exposure. It is the basis of the classification in fire resistance classes in accordance with EN 13501-2.
<b>Fire resistance classification</b>	Classes into which the components or structural members are classified according to their fire resistance period (fire ratings) (e.g. 30, 60, 90 minutes). Only components/structural members can be classified in fire resistance classes, however, not construction materials.
<b>Reaction to fire</b>	Response of a construction product in contributing by its own decomposition to a fire. The reaction of construction materials to fire is verified by fire tests to DIN 4102-1 or DIN EN 13501-1.
<b>UCKA marking</b>	The UKCA-marking documents that goods comply with the safety and health requirements of the United Kingdom. Its aim is to guarantee safe, flawless and high-quality goods on all United Kingdom markets



# SERVICE

## ILLUSTRATIVE AND RESULTS-DRIVEN: DIGITAL SERVICES FROM PFLEIDERER



### **WorkApp: [workapp.pfleiderer.com](https://workapp.pfleiderer.com)**

The quickest way to find the answers to all your decor-related questions: simply open the Decor Scanner on your smartphone, scan the decor, view detailed information straight away on your phone, receive combination recommendations and request the matching sample directly from the app, if required. It is compatible with all smartphones and, of course, you can also easily add the app to your home screen.



### **Digital Product Finder: [productfinder.pfleiderer.com](https://productfinder.pfleiderer.com)**

Which decorative panel is best suited to which application? Which product has particular material properties or surface characteristics? What is available quickly? Use the digital product finder to find the perfect material for your application in just a few steps. After all, bringing together creative ideas with construction requirements is what Pfleiderer does best!



### **Room Designer: [roomdesigner.pfleiderer.com](https://roomdesigner.pfleiderer.com)**

Combine all the decor collections in 26 different digital room layouts – and show your customers in advance how bespoke design options could look in their home, health or care setting, office, hotel, shop, caravan or yacht. Easy to use, with detailed decor lists and smart filters as well as an interactive compare function. You can print and download the results or save them as favourites.



### **Mood Board Tool: [moods.pfleiderer.com](https://moods.pfleiderer.com)**

Get the first glimpse of your desired decor before you order! Just upload your own image to our Mood Board Tool. The tool extracts the colours from your motif and suggests suitable decors from our portfolio. You can then save your created mood board in your account or send it via e-mail in order to discuss the selection further.



### **3D-Viewer: [3d-viewer.pfleiderer.com](https://3d-viewer.pfleiderer.com)**

In order to properly evaluate a surface texture, you have to be able to see it from different angles. That's why we provide the 3D VIEWER for surface textures! It enables you to get a realistic 360-degree view of our surface textures from all sides and in different lighting conditions. A useful tool for everyone who appreciates quick and illustrative support when evaluating and deciding on different textures!



### **Individual configurator: [individual.pfleiderer.com](https://individual.pfleiderer.com)**

The idea behind Pfleiderer's individual design concept is to enable almost unlimited creative freedom starting from a lot size of one. It allows you to use your own motifs – without compromising on the quality of the surface or core materials. You can use the Individual Product Finder to configure your unique product easily online, from selecting the core material to uploading your motif and enquiring about production.



### **BIM Data: [pfleiderer.com/bim](https://pfleiderer.com/bim)**

Simply transfer product information, decor and texture images into your digital project planning.



### **Declarations of performance: [pfleiderer.com/declaration-of-performance-ce](https://pfleiderer.com/declaration-of-performance-ce)**

In this area, you'll find a digital version of all relevant declarations of performance.



**Decor Scanner**  
workapp.pfleiderer.com



© Copyright 2023 Pfleiderer Deutschland GmbH.

This information is issued with great care. We do not however accept any responsibility for the accuracy, completeness and timeliness. There may be slight colour differences between the printed brochure image and the actual design.

Due to the continuous development and modification of our products, possible changes to the relevant standards, laws and regulations, our technical data sheets and product documents expressly do not represent a legally binding guarantee of the properties specified therein. In particular, no suitability for a specific purpose can be derived from this information. It is therefore the personal responsibility of the individual user to check the processing and suitability of the products described in this document for the intended use and to take into account the legal framework and the current state of the art. Furthermore, we expressly refer to the validity of our general terms and conditions.

You can find our general terms and conditions on our webpage: [www.pfleiderer.com](http://www.pfleiderer.com)

**Pfleiderer uses wood from Certified Sustainable Forest Management.**



[www.blauer-engel.de/uz76](http://www.blauer-engel.de/uz76)

- low emissions
- wood from sustainable forestry
- no adverse impact on health in the living environment

---

MADE IN GERMANY

**Good to know: the Pfleiderer quality promise.**

Pfleiderer wood-based panels stand for quality without compromise. We use sustainable raw materials and state-of-the-art production processes and we are fully committed to our site in Germany. For more information, visit [quality.pfleiderer.com](http://quality.pfleiderer.com).

**Pfleiderer UK Limited** · Greenway House · Larkwood Way · Tytherington Business Park · Macclesfield · Cheshire SK10 2XR · England  
Tel.: +44 (0) 16 25 660 410 · [info-uk@pfleiderer.com](mailto:info-uk@pfleiderer.com) · [www.pfleiderer.com](http://www.pfleiderer.com)

**Pfleiderer Deutschland GmbH** · Ingolstädter Straße 51 · 92318 Neumarkt · Germany  
Tel.: +49 (0) 91 81 / 28 480 · Fax: +49 (0) 91 81 / 28 482 · [info@pfleiderer.com](mailto:info@pfleiderer.com) · [www.pfleiderer.com](http://www.pfleiderer.com)